



Ty Cosy Access Statement

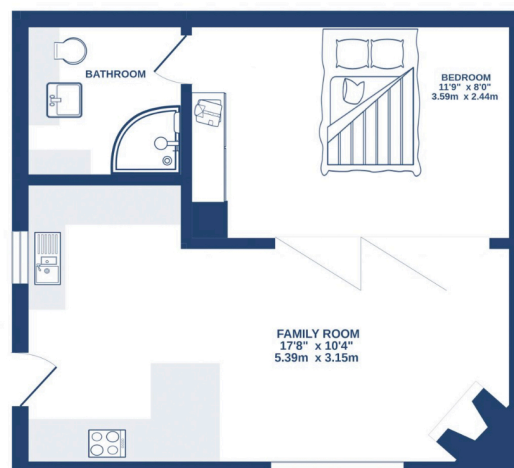
Pre-Arrival

- Bookings can be made online via the website or by phone or email.
- Directions to the property can be found in the 'Touch Stay' app, sent to you before your stay.
- Ty Cosy is arranged over one floor.
- You can view the floor plans of the property in this statement and in the 'Touch Stay' app.
- The nearest train station is Haverfordwest, served by trains from Cardiff Central Station and Swansea. There are taxis at the station awaiting all train service arrivals and there is a limited bus service to St Davids.
- The nearest bus stop is in St Davids centre, approximately 50m from the cottage. More information on bus times can be found at <https://bustimes.org/localities/st-davids-pembrokeshire>
- If you require the statement information, directions or other details in a different format, please contact us via our website, e-mail, or telephone.
- Delivery of provisions can be arranged by using one of the large supermarket chains and the local St Davids Peninsula Producers Food Hub, who offer a delivery service of locally produced food. <https://openfoodnetwork.org.uk/peninsula-producers-food-hub/shop>
- The cottage may only be suitable for guests who have a visual, hearing or mobility impairment if they are accompanied. Emergency warning systems only provide audible warnings.

Key Collection, Car Parking & Communications

- There is a narrow tarmac lane to drive to the property from the main road (not suitable for vehicles wider than a transit/VW van). You can turn around in the parking area to drive out to the street.
- Parking is available for your car on the gravel area in front of the cottage.
- The parking area is approximately 5 metres from the front door. A level paved path leads to a door (85cm wide with 108cm high latch) leading to a sun terrace and the entrance door to the accommodation.
- There is an outside light to the front of the cottage, illuminating the car park area and the entrance at night.
- The cottage will be available from 3pm on your day of arrival.
- The key to the property is kept in a key safe adjacent to the entrance door, 152cm from floor level. The key can be picked up from the St Davids Escapes office, by prior arrangement, if required.
- WiFi is provided within the cottage.
- Mobile reception can be poor in and around St Davids. Please check with your provider, prior to arrival.

Floor Plan



Entrance to Property & Entrance Hall

- There is one step to the front door which is 10cm high, 19cm deep and 92cm wide.
- The front door is 79cm wide and hinged on the right side. The keyhole is 95cm high.
- The entrance is lit by an outside light, controlled by a switch on the inside wall by the front.
- The floor covering inside the entrance is a wooden floor.
- The door leads directly into the kitchen.

Kitchen

- The kitchen has level access from the hall entrance door and lounge area.
- The oven is 82cm from the floor. The door of the oven drops down and the handle is 72cm above the floor. The hob is 90cm from the floor.
- The worktop and sink with mixer lever taps are 90cm above the floor. The microwave is integrated and 170cm high to the controls. The cordless kettle and toaster are on the worktop.
- The fridge freezer is undercounter with the highest shelf at 70cm and the lowest drawer at 27cm.
- The dining area is within the kitchen on a kitchen bar with two high stools, 70cm seat height.
- Glasses can be moved from the wall shelving if required. Please request this when booking.
- Natural daylight enters through the side windows and window by the sink.
- There are ceiling pendant lights and downlights.
- There is a wooden effect floor.
- There is a good colour contrast between floor, cupboards and work surfaces.
- Audible heat alarm fitted.
- There is a fire extinguisher and fire blanket located in the utility cupboard to the right of the microwave.

Lounge

- The lounge leads from the kitchen through an opening of 93cm.
- The room has one sofa with non-feather cushion seating.
- There is a Smart TV with remote control providing subtitles and audio description capability.
- Natural daylight enters through the large front window.
- There are ceiling down lights.
- There is a log burning stove. The door handle is 50cm from the floor.
- There is a wooden effect floor and central floor rug.
- Walls are very dark in colour, however, there is good colour contrast between floors, walls and doors.
- Audible smoke alarm fitted.

Double Bedroom

- The opening width between the bedroom and lounge is 232cm.
- The height of the double bed from the top of the mattress to the floor is 55cm and the clear space around the bed is 95cm.
- Non-feather duvets and pillows are provided.
- The dressing table is 77cm high and the bedside tables are 59cm high.
- There is a built in wardrobe with door handles at 98cm high and hanging rail at 154cm high.



- Natural daylight enters through the velux window. This has a remote control to operate the blind which is located on the wall between the dressing table and wardrobe. There is a rod stored in wardrobe, only to be used to open and close the velux window, if required.
- There are ceiling down lights and table lamps.
- One wall is very dark in colour, however, there is good colour contrast between floors, walls and doors.
- There is a wooden effect floor with bedside rugs.

Shower Room

- The shower room has level access from the bedroom.
- The door opening width between the bedroom and shower room is 71cm.
- The toilet seat height is 44 cm high and is only accessible from the front.
- The wash basin is mounted within a vanity unit and is 87cm high.
- There is a thermostatically controlled shower in a clear glass corner cubicle with sliding doors. The tray is 6cm high.
- There is no non-slip mat provided for the shower.
- There is a lever tap on the wash basin.
- There are no grab rails or balance aids in the shower.
- There is a wooden effect floor with bath mats.
- The floors, walls and furniture are light and dark tones, contrasting in colour and finishes.
- There is a heated towel rail, 59cm high to the lowest rail and 144cm high to the highest.
- Natural daylight enters through the velux window.
- There is a mirror light and ceiling downlights.

Sun Terrace

- The door opening width between the kitchen and terrace is 79cm.
- There is one step to the garden from the door which is 10cm high.
- There is a level paved patio area with free standing table (75cm high), sofa seat (51cm seat height) and chimnea fire.
- There area is illuminated with wall lights and planter lighting.

Additional Information

- The information folder in the cottage is produced in size 12 font.
- Emergency procedures and contacts are provided in the 'Touch Stay' app.
- The nearest doctor surgery and hospital information are provided in the 'Touch Stay' app.
- The cottage is no smoking throughout.
- Mobility scooters are available to hire in advance from Oriel y Parc in St Davids to explore the city. Telephone 01437 720392
- Explore West Wales accessible attractions <https://www.visitwales.com/destinations/west-wales/access-all-areas-west-wales>



Property Photographs



Access Lane From Street



Parking Area & Entrance to Sun Terrace



Paved Path To Entrance



Kitchen & Entrance Door



Kitchen & Dining



Lounge & Bedroom



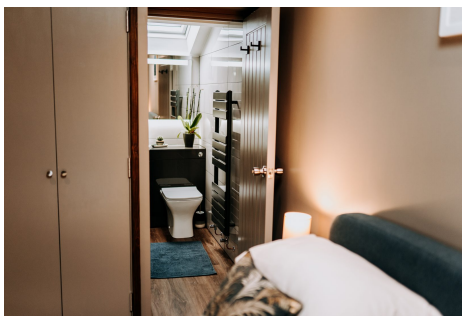
Lounge From Bedroom



Bedroom



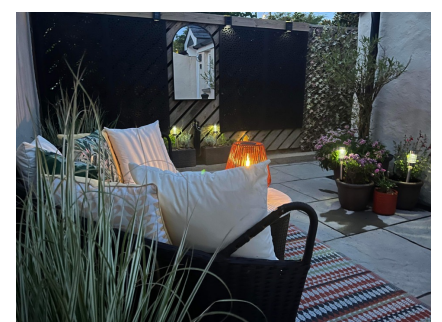
Bedroom



Shower Room From Bedroom



Shower Room



Sun Terrace

