



Harbourmasters Cottage Access Statement

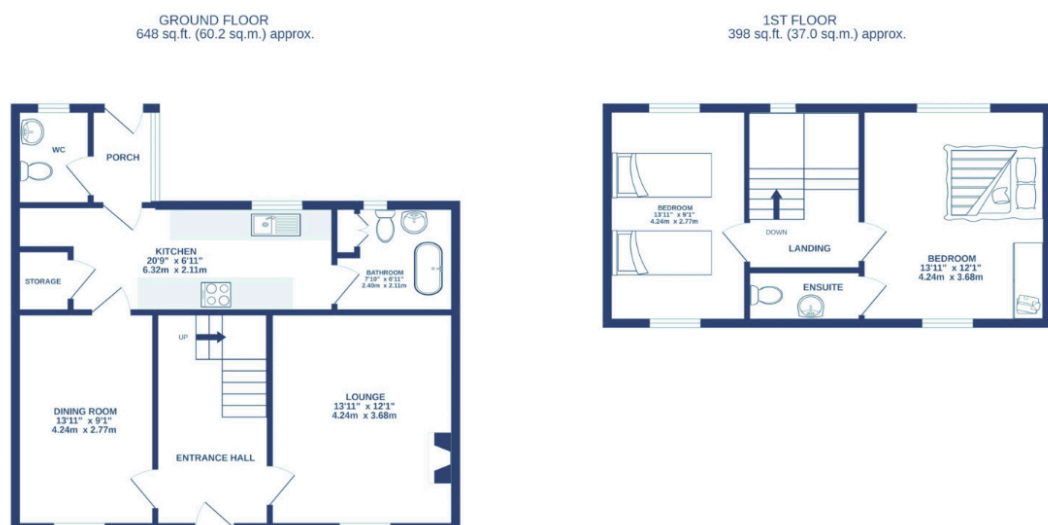
Pre-Arrival

- Bookings can be made online via the website or by phone or email.
- Directions to the property can be found in the 'Touch Stay' app, sent to you before your stay.
- Harbourmasters Cottage is arranged over two floors.
- You can view the floor plans of the property in this statement and in the 'Touch Stay' app.
- The nearest train station is Haverfordwest, served by trains from Cardiff Central Station and Swansea. There are taxis at the station awaiting all train service arrivals and there is a limited bus service to St Davids.
- The nearest bus stop is in St Davids centre, approximately 300m from the cottage. More information on bus times can be found at <https://bustimes.org/localities/st-davids-pembrokeshire>
- If you require the statement information, directions or other details in a different format, please contact us via our website, e-mail, or telephone.
- Delivery of provisions can be arranged by using one of the large supermarket chains and the local St Davids Peninsula Producers Food Hub, who offer a delivery service of locally produced food. <https://openfoodnetwork.org.uk/peninsula-producers-food-hub/shop>
- The cottage may only be suitable for guests who have a visual, hearing or mobility impairment if they are accompanied. Emergency warning systems only provide audible warnings.

Key Collection, Car Parking & Communications

- There is parking for one car directly in front of the house on the private area of the deep pavement. You will need to drive up the kerb to access the space and park close to the house.
- There is street lighting to the front of the cottage, illuminating the entrance at night.
- The cottage will be available from 4.30pm on your day of arrival.
- The key to the property is kept in a key safe to the far left of the entrance door and the drain pipe in the corner, 88cm from floor level. The key can be picked up from the St Davids Escapes office, by prior arrangement, if required.
- WiFi is provided within the cottage.
- Mobile reception can be poor in and around St Davids. Please check with your provider, prior to arrival.

Floor Plan



Entrance to Property & Entrance Hall

- The pavement outside the entrance door is on a slight slope. There is a 6cm high threshold step to the door.
- The front door is 78cm wide and hinged on the right side. The keyhole is 128cm high.
- The floor covering inside the entrance is tiled with an entrance mat.
- The hall is 98cm wide and clear of furniture and obstacles.
- There is good colour contrast between floors, walls and doors.

Stairs & Landing

- The stairs and landings are well illuminated, with good ceiling heights.
- There are 6 steps (21cm high, 28cm deep, 67cm wide, with no handrail) to a half landing. There is a handrail on the left side, 81cm high, for the further 6 steps to the first floor landing.
- The landing is 125cm wide.
- The wooden stair treads are exposed and there is a wooden floor on the landing.
- Audible smoke alarm fitted.

Lounge

- The lounge is situated on the ground floor with level entry from the hall.
- The door opening width between the hall and lounge is 69cm.
- The room has two sofas with non-feather cushion seating.
- There is a Smart TV with remote control providing subtitles and audio description capability.
- Natural daylight enters through the front window.
- There are ceiling spot lights, floor lamp and table lamps.
- The floor is tiled with a central floor rug.
- There is good colour contrast between floors and walls.

Dining Room

- The dining room is situated on the ground floor with level entry from the hallway.
- The door opening width between the hallway and dining room is 69cm.
- There is a dining table with four loose chairs (45cm seat height) and a clear space around the table end of 135cm.
- Natural daylight enters through the front window.
- There are ceiling spot lights and table lamps.
- The floor is tiled with central floor rug.
- There is good colour contrast between floors and walls.
- Audible smoke alarm fitted.

Kitchen

- The kitchen is situated on the ground floor with level access from the dining room and door to the garden porch.
- The door opening width between the hall and kitchen is 72cm and between the kitchen and garden porch is 67cm.
- The oven is 84cm from the floor. The door of the oven drops down and the handle is 51cm above the floor. The hob is 92cm from the floor.



- The worktop and sink with mixer lever taps are 92cm above the floor. The microwave is on the table adjacent to the worktop (76cm high), with a cordless kettle and toaster are on the worktop.
- The fridge is undercounter with the highest shelf at 57cm and the lowest drawer at 30cm.
- Natural daylight enters through the rear window.
- There are ceiling spotlights.
- The floor is tiled.
- There is a subtle colour contrast between floor and cabinets.
- Audible heat alarm fitted.
- There is a fire blanket located in the pantry.

Bathroom (no toilet) - Ground Floor

- The bathroom is situated on the first floor with level access from the kitchen.
- The door opening width between the kitchen and bathroom is 70cm.
- The wash basin is pedestal mounted and 84cm high.
- The bath is 59cm high with an overhead shower and clear glass fixed screen.
- There is a non-slip mat provided for the bath.
- There are cross head taps on both wash basin and bath.
- There are no grab rails or balance aids on the bath.
- The floor covering is tiled.
- The floors contrast with the furniture wall colours and finishes.
- There is a towel rail stand 79cm high to the highest rail.
- Natural daylight enters through the rear window.
- There are ceiling downlights.

Cloak Room & Garden Porch - Ground Floor

- The door opening width between the porch and cloak room is 70cm.
- The toilet seat height is 44 cm high and is accessible from the right side and front.
- The wash basin is pedestal mounted and 79cm high.
- The floor covering is tiled.
- The floors contrast with the furniture wall colours and finishes.
- Natural daylight enters through the small rear window.
- There is a ceiling light.
- The door opening width between the porch and garden is 74cm.

Bedroom 1 - Double Bedroom with Ensuite Cloakroom - First Floor

- The door opening width between the bedroom and landing is 74cm.
- The height of the double bed from the top of the mattress to the floor is 58cm and the clear space around the bed is 56cm.
- Non-feather duvets and pillows are provided.
- The chest of drawers is 95cm high and the bedside tables are 71cm high.
- There is a built in wardrobe with door handles at 127cm high and hanging rail at 159cm high.
- Natural daylight enters through the small front and rear windows.
- There is a ceiling pendant light and table lamps.
- There is a wooden floor with central rug.
- The door opening width between the bedroom and cloakroom is 59cm.
- The toilet seat height is 47 cm high and is only accessible from the front.
- The wash basin is pedestal mounted and 82cm high.
- There are cross head taps on the wash basin.

- The floor covering is a painted wooden floor.
- The floors contrast with the furniture wall colours and finishes.
- There is no natural daylight.
- There is a ceiling downlight.

Bedroom 2 - Twin Bedroom - First Floor

- The door opening width between the bedroom and landing is 78cm.
- The height of the twin beds from the top of the mattress to the floor is 65cm and the clear space between the beds is 120cm.
- Non-feather duvets and pillows are provided.
- The chest of drawers is 84cm high and the bedside tables are 71cm high.
- There are two door hanging hooks at 143cm high.
- Natural daylight enters through the small front and rear windows.
- There is a ceiling pendant light and table lamps.
- There is a wooden floor with bedside floor rugs.

Garden

- The door opening width between the garden porch and garden is 75cm.
- There is one step to the garden from the door which is 12cm high, 17.5cm deep and 91cm wide.
- There is a small paved patio area with picnic table (72cm high) and fixed benches (12cm seat height).
- There is a level entrance (take care stepping over the small gully) to a sloping grass lawn area.

Additional Information

- The information folder in the cottage is produced in size 12 font.
- Emergency procedures and contacts are provided in the 'Touch Stay' app.
- The nearest doctor surgery and hospital information are provided in the 'Touch Stay' app.
- The cottage is no smoking throughout.
- Mobility scooters are available to hire in advance from Oriel y Parc in St Davids to explore the city. Telephone 01437 720392
- Explore West Wales accessible attractions <https://www.visitwales.com/destinations/west-wales/access-all-areas-west-wales>



Property Photographs



Parking Area & Entrance Door



Lounge



Dining Room



Kitchen



Ground Floor Bathroom



Garden Porch



Double Bedroom



Twin Bedroom



Garden Patio & Raised Lawn



Lawn Garden

