



Bwthyn Dowrog Access Statement

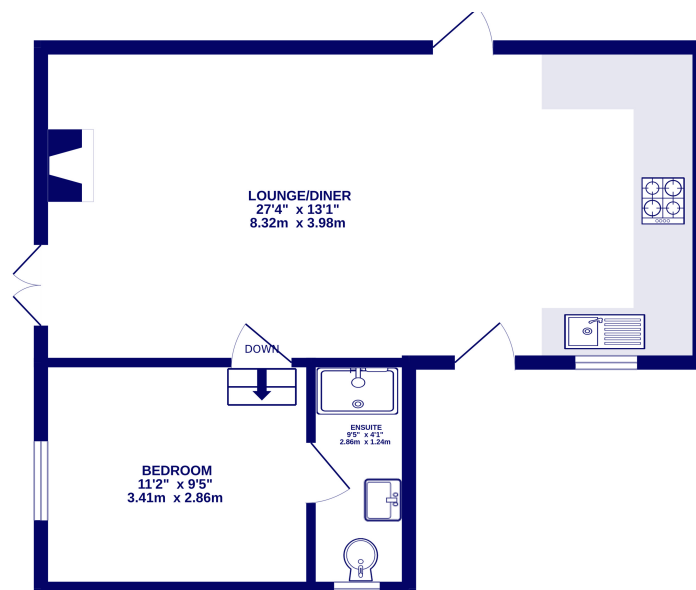
Pre-Arrival

- Bookings can be made online via the website or by phone or email.
- Directions to the property can be found in the 'Touch Stay' app, sent to you before your stay.
- Bwthyn Dowrog is arranged on one level.
- You can view the floor plans of the property in this statement and in the 'Touch Stay' app.
- The nearest train station is Haverfordwest, served by trains from Cardiff Central Station and Swansea. There are taxis at the station awaiting all train service arrivals and a limited bus service to St Davids.
- The nearest bus stop is in St Davids centre, approximately 1 mile from the cottage. More information on bus times can be found at <https://bustimes.org/localities/st-davids-pembrokeshire>
- If you require this access statement information, directions or other details in a different format, please contact us via our website, e-mail, or telephone.
- Delivery of provisions can be arranged by using one of the large supermarket chains and the local St Davids Peninsula Producers Food Hub, who offer a delivery service of locally produced food. <https://openfoodnetwork.org.uk/peninsula-producers-food-hub/shop>
- The cottage may only be suitable for guests who have a visual, hearing or mobility impairment if they are accompanied. Emergency warning systems only provide audible warnings.

Key Collection, Car Parking & Communications

- Parking is available for one car on the gravel area to the side of the cottage.
- The parking area is approximately 20 metres from the front door on a paved path.
- There is an outside light to the front of the cottage, illuminating the car park area and the entrance at night.
- The cottage will be available from 4.30pm on your day of arrival.
- The key to the property will be provided by the owner on arrival.
- WiFi is provided within the cottage.
- Mobile reception can be poor in and around Rhodiad and the St Davids area. Please check with your provider, prior to arrival.

Floor Plan



Entrance to Property

- There is a level paved approach to the entrance door.
- There is one step to the front door which is 12.5cm high, and a further step over the door threshold, 6cm high.
- The front door is 81cm wide and hinged on the left side. The keyhole/handle is 140cm high.
- The entrance is lit by an outside light, controlled by a switch on the inside wall by the front.
- The door leads directly into the kitchen and contrasted in colour to the stone front and interior.
- The floor covering inside the entrance is wooden.

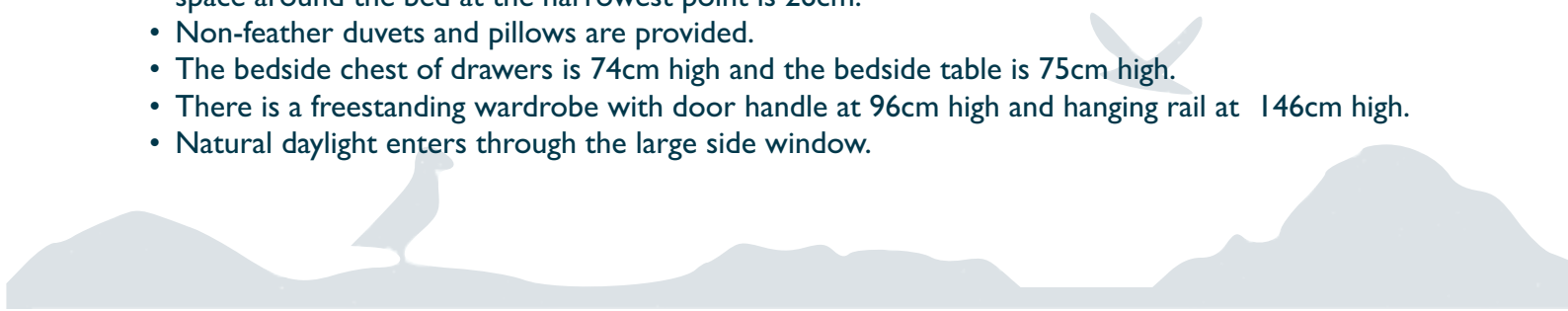
Kitchen & Dining Area

- The kitchen is situated on the ground floor with level access from the entrance door and lounge area.
- There is a further door to the rear garden, 83cm wide, with a single step down (7cm) to the outside.
- The oven is 82cm from the floor. The door of the oven drops down and the handle is 72cm above the floor. The hob is 91cm from the floor.
- The worktop and sink with mixer lever taps are 91cm above the floor. The microwave is on the worktop, with a cordless kettle and toaster.
- The fridge is undercounter with the freezer box at 60cm and the lowest drawer at 30cm.
- The dining area is within the kitchen. There is a round dining table with four loose chairs (51cm seat height) and a clear space around the table of 71cm.
- Natural daylight enters through the window and half-glazed doors.
- There is a ceiling pendant over the dining table and spot lights over the kitchen units.
- The floor is tiled in the kitchen and wooden in the dining area.
- There is a good colour contrast between floor, cupboards and other surfaces.
- There is a fire extinguisher and fire blanket located next to the garden door.

Lounge

- The lounge leads directly from the kitchen and dining area.
- There are french doors, 115cm wide with a single step down leading to the side garden terrace.
- The room has one sofa and an armchair with non-feather cushion seating.
- There is a Smart TV with remote control providing subtitles and audio description capability.
- Natural daylight enters through the French doors.
- There are wall lights, floor lamp and table lamp.
- There is a log burning stove. The door handle is 34cm from the floor.
- There is a wooden floor with central rug.
- There is good colour contrast between floors, walls and doors.
- Audible smoke alarm fitted.

Double Bedroom

- The door opening width between the bedroom and lounge is 72cm.
 - There are two steps down to the bedroom level (19cm high).
 - The height of the double bed from the top of the mattress to the floor is 54cm and the clear space around the bed at the narrowest point is 26cm.
 - Non-feather duvets and pillows are provided.
 - The bedside chest of drawers is 74cm high and the bedside table is 75cm high.
 - There is a freestanding wardrobe with door handle at 96cm high and hanging rail at 146cm high.
 - Natural daylight enters through the large side window.
- 

- There are wall lights, ceiling pendant light and table lamps.
- There is a wooden floor.

Shower Room

- The shower room has level access from the bedroom.
- The door opening width between the bedroom and shower room is 75cm.
- The toilet seat height is 45cm high and is only accessible from the front.
- The wash basin is mounted above a vanity unit and 85cm high.
- There is a thermostatically controlled shower in a clear glass cubicle with sliding doors. the tray is 17cm high.
- There is no non-slip mat provided for the shower.
- There is a lever tap on the wash basin.
- There are no grab rails for the shower.
- The floor covering is tiled.
- The floors contrast in tone with the fittings and wall finishes.
- There is a heated towel rail, 63cm high to the lowest rail and 153cm high to the highest.
- Natural daylight enters through the small side window.
- There is a ceiling light.

Garden

- The door opening width between the kitchen and garden is 83cm.
- There are two steps up to the garden terrace, 16cm high.
- The door opening width between the lounge and garden terrace is 115cm.
- There is one step down to the garden from the lounge doors which is 19.5cm high.
- The concrete terrace area has a free standing side table (76cm high), and two chairs (46cm seat height), outside the kitchen.
- The terrace leads to the rear lawn and garden area, through a low level wall, 67cm wide.

Additional Information

- The information folder in the cottage is produced in size 12 font.
- Emergency procedures and contacts are provided in the 'Touch Stay' app.
- The nearest doctor surgery and hospital information are provided in the 'Touch Stay' app.
- The cottage is no smoking throughout.
- Mobility scooters are available to hire in advance from Oriel y Parc in St Davids to explore the city. Telephone 01437 720392
- Explore West Wales accessible attractions <https://www.visitwales.com/destinations/west-wales/access-all-areas-west-wales>



Property Photographs



Entrance Door



Kitchen



Lounge



Lounge



Bedroom



Bedroom (looking to shower)



Shower Room



Side Terrace



Rear Terrace & Garden

