



Gallery House Access Statement

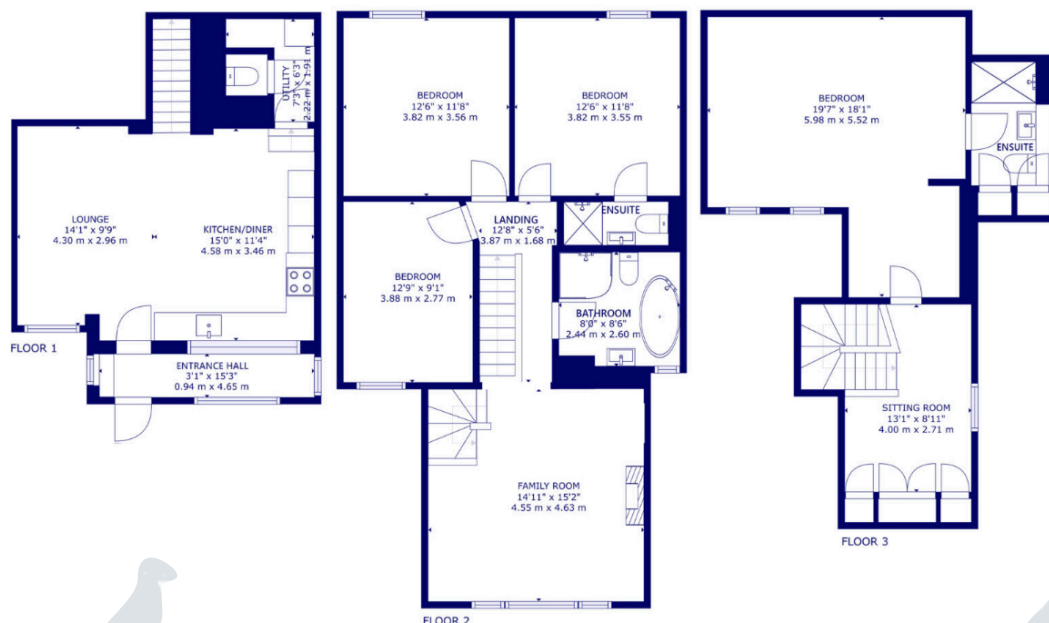
Pre-Arrival

- Bookings can be made online via the website or by phone or email.
- Directions to the property can be found in the 'Touch Stay' app, sent to you before your stay.
- Gallery House is arranged over three floors.
- You can view the floor plans of the property in this statement and in the 'Touch Stay' app.
- The nearest train station is Haverfordwest, served by trains from Cardiff Central Station and Swansea. There are taxis at the station awaiting all train service arrivals and there is a limited bus service to St Davids.
- The nearest bus stop is in St Davids centre, approximately 150m from the cottage. More information on bus times can be found at <https://bustimes.org/localities/st-davids-pembrokeshire>
- If you require the statement information, directions or other details in a different format, please contact us via our website, e-mail, or telephone.
- Delivery of provisions can be arranged by using one of the large supermarket chains and the local St Davids Peninsula Producers Food Hub, who offer a delivery service of locally produced food. <https://openfoodnetwork.org.uk/peninsula-producers-food-hub/shop>
- There are a number of steps up to the entrance, that if you have mobility difficulties you may find difficult.
- The cottage may only be suitable for guests who have a visual, hearing or mobility impairment if they are accompanied. Emergency warning systems only provide audible warnings.

Key Collection, Car Parking & Communications

- Parking is available for your car in the nearby car park, only 15m opposite the property, accessed up a hill.
- The cottage will be available from 4.00pm on your day of arrival.
- There is a code lock on the entrance door, 128cm from floor level.
- WiFi is provided within the cottage.
- Mobile reception can be poor in and around St Davids. Please check with your provider, prior to arrival.

Floor Plan



Entrance to Property & Entrance Hall

- There are 7 steps up (18.5cm high, 88cm wide) to a gate (93cm wide) to the level terrace leading to the front door. There is no handrail.
- There are 3 steps up to the porch door (18cm high) with no hand rail.
- The porch door is 72cm wide and hinged on the left side. The keyhole is 95cm high.
- The entrance is lit by an outside light, controlled by a switch on the inside wall by the front.
- The floor covering inside the entrance is tiled with an entrance mat.
- The hall leads directly to the door to the lounge.
- There is good colour contrast between floors, walls and doors.

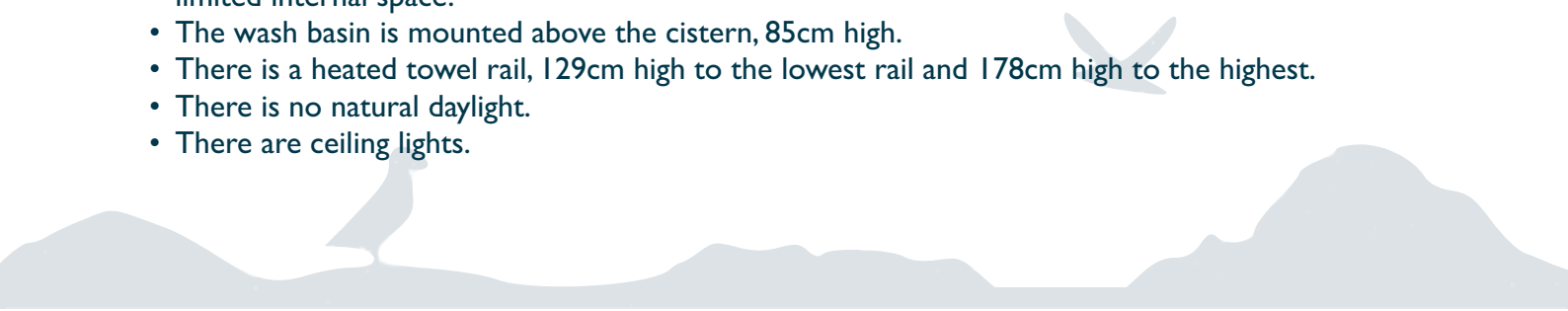
Ground Floor Lounge

- The lounge is situated on the ground floor with level entry from the entrance hall.
- The door opening width between the hall and lounge is 74.5cm.
- The room has one sofa with two side chairs with non-feather cushion seating.
- There is a Smart TV with remote control providing subtitles and audio description capability.
- Natural daylight enters through the large window.
- There are wall lights, ceiling pendant light and floor lamps.
- There is a wooden floor with central floor rug.
- There is limited colour contrast between floors, walls and doors.

Kitchen & Dining

- The kitchen and dining area is situated on the ground floor with open access from the lounge.
- The integrated oven is 151cm from the floor. The door of the oven drops down and the handle is 117cm above the floor. The hob is 89cm from the floor.
- The worktop and sink with mixer lever taps are 89cm above the floor. The microwave is on the worktop, with a cordless kettle and toaster.
- There is an integrated fridge freezer with the highest fridge shelf at 166cm and the lowest drawer at 42cm.
- The dining area is within the kitchen. There is a dining table with two loose chairs and two benches (44cm seat height) and a clear space around the table of 105cm.
- Glasses can be moved from the wall cupboards if required. Please request this when booking.
- Natural daylight enters through the large front window.
- There are ceiling spotlights and a ceiling pendant light over the dining table.
- There is a wooden floor.
- There is a good colour contrast between floor, cupboards and work surfaces.
- Audible heat alarm fitted.
- There is a fire extinguisher located to the left of the fridge freezer.

Utility Room & Cloakroom

- The utility room and cloakroom is situated on the ground floor accessed up two steps (12cm high) from the kitchen.
 - The door opening width between the kitchen and utility room is 72cm and cloakroom is 66cm.
 - The cloakroom toilet seat height is 44 cm high and is only accessible from the front. There is limited internal space.
 - The wash basin is mounted above the cistern, 85cm high.
 - There is a heated towel rail, 129cm high to the lowest rail and 178cm high to the highest.
 - There is no natural daylight.
 - There are ceiling lights.
- 

- The floor is tiled and contrasts in colour with the walls.

Stairs & Landing

- The stairs and landings are well illuminated with ceiling spot lights.
- There are 14 steps (20cm high, 25cm deep, 80cm wide) with a handrail on the left side, 98cm high from the stair tread arriving at the landing.
- The first floor landing is 72.5cm wide.
- There is a single step from the landing to the lounge. Take care as it is easy to miss.
- There is a further winding stair from the lounge to the second floor of 15 steps (18.5cm high, 64cm wide) with a handrail on the left and right side, 97cm from step level.
- The second floor landing is 150cm wide. It is located within the eaves and so has restricted headroom around the perimeter.
- The floor covering is a short pile carpet.
- Audible smoke alarm fitted.

First Floor Lounge

- The opening width between the landing and lounge is 59.5cm.
- The room has three sofas with non-feather cushion seating.
- Natural daylight enters through the large window.
- There are wall lights, floor lamps and table lamps.
- There is a gas wall mounted fire. If you have dexterity difficulties, you may find it difficult to operate.
- There is a wooden floor with central floor rug.
- There is a good colour contrast between floors and walls.
- Audible smoke alarm fitted.

Family Bathroom - First Floor

- The bathroom is situated on the first floor with level access from the landing.
- The door opening width between the landing and bathroom is 75cm.
- The toilet seat height is 43 cm high and is only accessible from the front.
- The wash basin is mounted within a vanity, and 80cm high.
- The freestanding bath is 56cm high with a hand held shower.
- There is a separate thermostatically controlled shower in a clear glass cubicle with sliding doors. The tray is 20cm high.
- There is a non-slip mat provided for either the shower or bath.
- There are lever taps on both wash basin and bath.
- There are no grab rails or balance aids in either the bath or shower.
- The floor covering is tiled.
- The floors and fixtures are light in tone and contrast in colours with the dark walls.
- There is a heated towel rail, 81cm high to the lowest rail and 192cm high to the highest.
- Natural daylight enters through a small window adjacent to the bath.
- There are ceiling downlights.

Bedroom 1 - Double Ensuite Bedroom - First Floor

- The door opening width between the bedroom and landing is 74.5cm.
- The height of the double bed from the top of the mattress to the floor is 53cm and the clear space around the bed is 86cm.
- Non-feather duvets and pillows are provided.

- The chest of drawers is 110cm high and the bedside tables are 60.5cm high.
- There is a freestanding wardrobe with door handles at 102cm high and hanging rail at 184cm high.
- Natural daylight enters through the large front window.
- There are ceiling downlights and table lamps.
- There is a wooden floor with flat weave floor rug.
- The door opening width between the bedroom and en-suite is 66.5cm.
- The toilet seat height is 43 cm high and is only accessible from the front.
- The wash basin is mounted within a vanity, 82cm high.
- There is a thermostatically controlled shower in a clear glass cubicle with hinged doors. The tray is 7cm high.
- There is a non-slip mat provided for the shower.
- There is a lever tap on the wash basin.
- There are no grab rails in the shower.
- The floor covering is tiled.
- The floors and fixtures are light in tone and contrast in colours with the walls.
- There is a heated towel rail, 145cm high to the lowest rail and 177cm high to the highest.
- There is no natural daylight.
- There are ceiling downlights.

Bedroom 2 - Twin Bedroom - First Floor

- The door opening width between the bedroom and landing is 75cm.
- The height of the twin beds from the top of the mattress to the floor is 57cm and the clear space between the beds is 89cm.
- Non-feather duvets and pillows are provided.
- The bedside tables are 58cm high and 105cm high.
- There is a freestanding wardrobe with door handles at 103cm high and hanging rail at 157cm high.
- Natural daylight enters through the large window.
- There are ceiling downlights and table lamps.
- There is a wooden floor with bedside rug.

Bedroom 3 - Twin Bedroom - First Floor

- The door opening width between the bedroom and landing is 74.55cm.
- The height of the twin beds from the top of the mattress to the floor is 64cm and the clear space between the beds is 72cm.
- Non-feather duvets and pillows are provided.
- The chest of drawers is 142cm high and the bedside table is 41cm high.
- There is a freestanding wardrobe with door handles at 104cm high and hanging rail at 172cm high.
- Natural daylight enters through the large window.
- There are ceiling spotlights and a table lamp.
- The flooring covering is a short piled carpet.

Bedroom 4 - Kingsize Double Bedroom & Ensuite - Second Floor

- The door opening width between the bedroom and landing is 62.5cm.
- There is a single step from the landing to the bedroom. Take care as it is easy to miss.

- The room is located within the eaves and so has restricted headroom around the perimeter.
- The height of the kingsize bed from the top of the mattress to the floor is 58cm and the clear space around the beds is 35cm.
- Non-feather duvets and pillows are provided.
- The chest of drawers is 78cm high and the bedside tables are 59cm high.
- There is a built in wardrobe, located on the landing with door handles at 135cm high and hanging rail at 143cm high.
- Natural daylight enters through the velux windows (these have a blind).
- There is ceiling track lighting and table lamps.
- There is a wooden floor with flat weave floor rug.
- The door opening width between the bedroom and en-suite is 75.5cm.
- The toilet seat height is 44 cm high and is only accessible from the front.
- The wash basin is pedestal mounted and 81cm high (no pedestal).
- There is a thermostatically controlled shower with a clear glass screen (opening between wall 42.5cm). The tray is 13cm high.
- There is a non-slip mat provided for the shower.
- There is a lever tap on the wash basin.
- There are no grab rails or balance aids in the shower.
- The floor covering is tiled.
- The floors, walls and furniture are light in tone with little contrasting colours and finishes.
- There is a heated towel rail, 77cm high to the lowest rail and 135cm high to the highest.
- Natural daylight enters through the velux window.
- There are ceiling downlights and mirror lighting.

Garden Terrace

- There is a level paved patio area with two free standing table (73cm high), and four chairs around each (45cm seat height).

Additional Information

- The information folder in the cottage is produced in size 12 font.
- Emergency procedures and contacts are provided in the 'Touch Stay' app.
- The nearest doctor surgery and hospital information are provided in the 'Touch Stay' app.
- The cottage is no smoking throughout.
- Mobility scooters are available to hire in advance from Oriel y Parc in St Davids to explore the city. Telephone 01437 720392
- Explore West Wales accessible attractions <https://www.visitwales.com/destinations/west-wales/access-all-areas-west-wales>

Property Photographs



Gate to Terrace and Entrance



Terrace



Dining Area & Stair to First Floor



Ground Floor Lounge



Kitchen



First Floor Lounge



Lounge & Stair to 2nd Floor



First Floor Landing



First Floor Bathroom



Double Bedroom



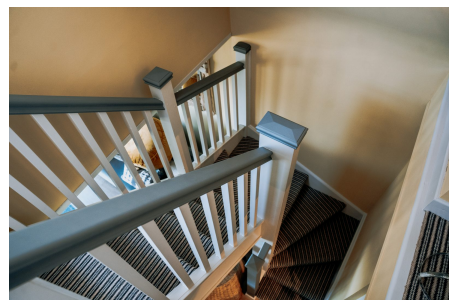
Double Bedroom En-suite



Twin Bedroom



Twin Bedroom



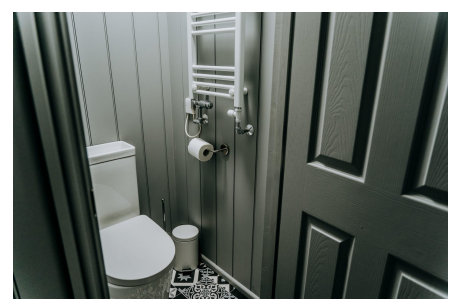
Stair To 2nd Floor



2nd Floor Bedroom



2nd Floor Ensuite



Ground Floor Cloakroom



Terrace