



Gallery Nook Access Statement

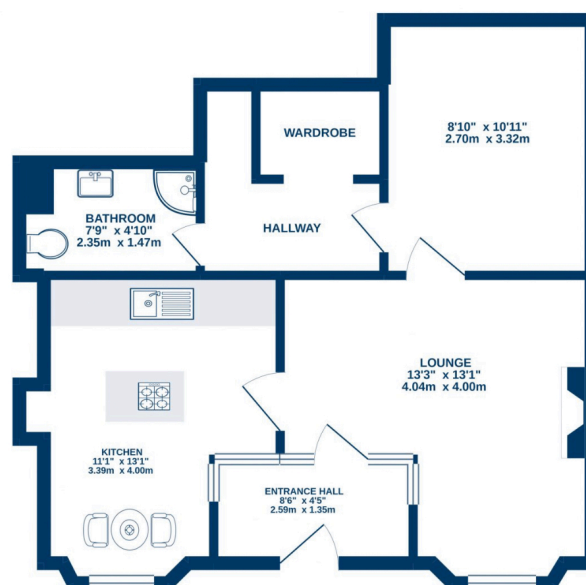
Pre-Arrival

- Bookings can be made online via the website or by phone or email.
- Directions to the property can be found in the 'Touch Stay' app, sent to you before your stay.
- Gallery Nook is arranged over one floor.
- You can view the floor plans of the property in this statement and in the 'Touch Stay' app.
- The nearest train station is Haverfordwest, served by trains from Cardiff Central Station and Swansea. There are taxis at the station awaiting all train service arrivals and there is a limited bus service to St Davids.
- The nearest bus stop is in St Davids centre, approximately 50m from the cottage. More information on bus times can be found at <https://bustimes.org/localities/st-davids-pembrokeshire>
- If you require the statement information, directions or other details in a different format, please contact us via our website, e-mail, or telephone.
- Delivery of provisions can be arranged by using one of the large supermarket chains and the local St Davids Peninsula Producers Food Hub, who offer a delivery service of locally produced food. <https://openfoodnetwork.org.uk/peninsula-producers-food-hub/shop>
- The cottage may only be suitable for guests who have a visual, hearing or mobility impairment if they are accompanied. Emergency warning systems only provide audible warnings.

Key Collection, Car Parking & Communications

- You can off-load in front of the cottage. If you are a 'Blue Badge' holder, there is a single yellow line restriction outside the cottage, permitting you to park. Alternatively, parking is available for your car in the nearby car park, 50m from the property, accessed up a hill and then onto level street, using public pavement.
- There are outside lights to the front of the cottage, illuminating the entrance at night.
- The cottage will be available from 3.00pm on your day of arrival.
- The key to the property is kept in a key safe adjacent to the entrance door, 154cm from floor level. The key can be picked up from the St Davids Escapes office, by prior arrangement, if required.
- WiFi is provided within the cottage.
- Mobile reception can be poor in and around St Davids. Please check with your provider, prior to arrival.

Floor Plan



Entrance to Property & Entrance Hall

- There is level access to the front door.
- The front door is 78cm wide and hinged on the left side. The keyhole is 95cm high.
- The entrance is lit by outside lights, controlled by an automatic timer.
- The floor covering inside the entrance is tiled with coir entrance mat.
- The hall is 105cm deep and clear of obstacles.
- There is good colour contrast between floors, walls and doors. There are views into the lounge and kitchen through upper glazed windows.

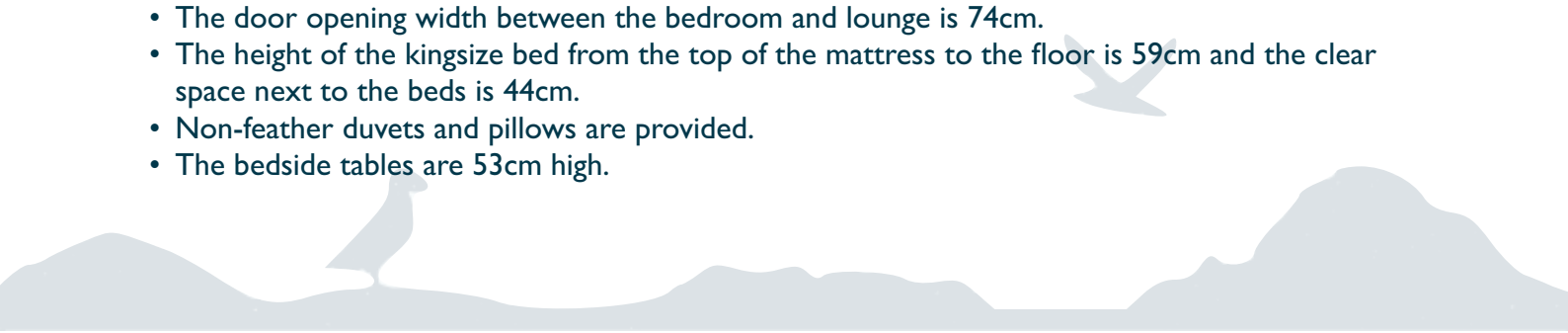
Lounge

- The lounge has a level entry from the hall and entry to the bedroom.
- The door opening width between the hall and lounge is 79cm, and lounge and bedroom is 74cm.
- The room has one sofa and an armchair with non-feather cushion seating.
- There is a Smart TV with remote control providing subtitles and audio description capability.
- Natural daylight enters through the large front window.
- There are floor lamps, table lamps and down lights.
- There is an electric log burning stove with remote control.
- There is a wooden floor with floor rugs.
- There is good colour contrast between floors, walls and doors.
- Audible smoke alarm fitted.

Kitchen & Dining Area

- The kitchen has a level access from the lounge.
- The door opening width between the lounge and kitchen is 74cm
- The integrated oven is 130cm from the floor and the microwave is 158cm high. The door of the oven drops down and the handle is 120cm above the floor. The hob is 94cm from the floor.
- The worktop and sink with mixer lever taps are 94cm above the floor. The cordless kettle, coffee machine and toaster are all on the counter top.
- The fridge freezer is integrated with the highest fridge shelf at 178cm and the lowest freezer drawer at 43cm.
- The dining area is within the kitchen. There is a dining table with two loose chairs (48cm seat height) and a clear space around the table of 75cm.
- Glasses can be moved from the wall cupboards if required. Please request this when booking.
- Natural daylight enters through the large front window.
- There is under wall unit lighting and ceiling downlights.
- There is a wooden floor.
- There is a good colour contrast between floor, cupboards and other surfaces.
- Audible heat alarm fitted.
- There is a fire blanket located under the sink.

Kingsize Bedroom

- The door opening width between the bedroom and lounge is 74cm.
 - The height of the kingsize bed from the top of the mattress to the floor is 59cm and the clear space next to the beds is 44cm.
 - Non-feather duvets and pillows are provided.
 - The bedside tables are 53cm high.
- 

- There is no natural daylight.
- There are ceiling down lights, floor lamp and table lamps.
- There is a wooden floor with bedside floor rugs.

Shower Room & Dressing Room

- The shower room and dressing room have level access from the lounge and hallway.
- The door opening width between the hallway and shower room is 75cm and the opening to the dressing room is 76cm. The door width from hall to shower room is 55cm.
- There is a hanging rail in the dressing room, 132cm high.
- The toilet seat height is 43 cm high and is only accessible from the front.
- The wash basin is wall mounted and 82cm high.
- There is a separate thermostatically controlled shower in a clear glass cubicle with sliding doors. The tray is 9cm high.
- There is a non-slip mat provided for the shower.
- There are lever taps on the wash basin.
- There are no grab rails in the shower.
- The floor covering is tiled.
- The floors, walls and furniture contrast in colours and finishes.
- There is a heated towel rail, 150cm high to the lowest rail and 92cm high to the highest.
- There is no natural daylight.
- There are ceiling downlights.

Additional Information

- The information folder in the cottage is produced in size 12 font.
- Emergency procedures and contacts are provided in the 'Touch Stay' app.
- The nearest doctor surgery and hospital information are provided in the 'Touch Stay' app.
- The cottage is no smoking throughout.
- Mobility scooters are available to hire in advance from Oriel y Parc in St Davids to explore the city. Telephone 01437 720392
- Explore West Wales accessible attractions <https://www.visitwales.com/destinations/west-wales/access-all-areas-west-wales>

Property Photographs



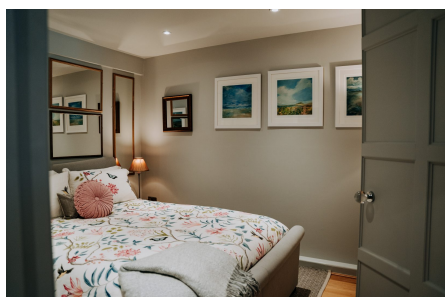
Entrance Door



Kitchen



Lounge & Entrance to Bedroom



Kingsize Bed



Shower Room & Dressing Room



Shower Room