



Summer Cottage Access Statement

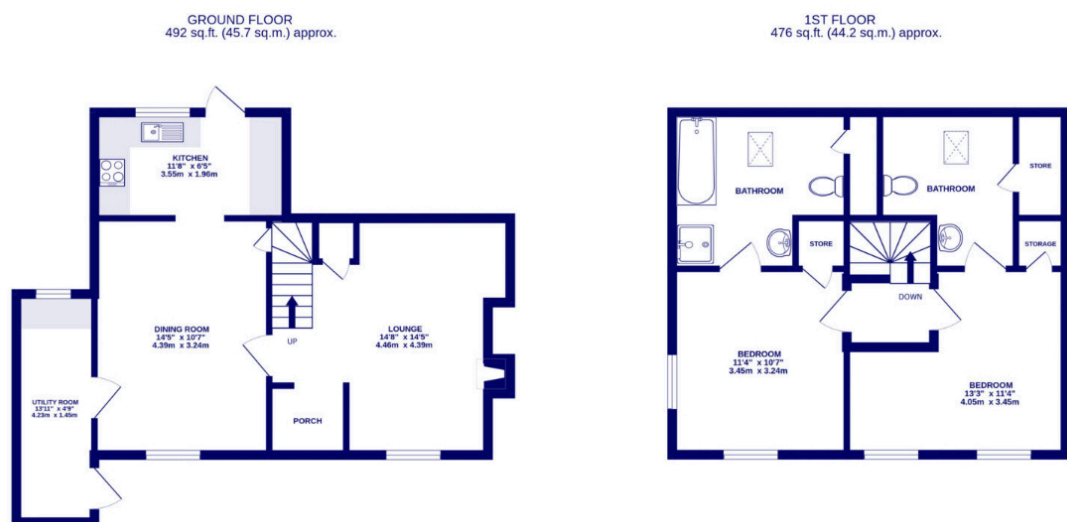
Pre-Arrival

- Bookings can be made online via the website or by phone or email.
- Directions to the property can be found in the 'Touch Stay' app, sent to you before your stay.
- Summer Cottage is arranged over two floors.
- You can view the floor plans of the property in this statement and in the 'Touch Stay' app.
- The nearest train station is Haverfordwest, served by trains from Cardiff Central Station and Swansea. There are taxis at the station awaiting all train service arrivals and there is a limited bus service to St Davids.
- The nearest bus stop is in St Davids centre, approximately 1.5km from the cottage. More information on bus times can be found at <https://bustimes.org/localities/st-davids-pembrokeshire> <https://bustimes.org/localities/solva>
- If you require the statement information, directions or other details in a different format, please contact us via our website, e-mail, or telephone.
- Delivery of provisions can be arranged by using one of the large supermarket chains and the local St Davids Peninsula Producers Food Hub, who offer a delivery service of locally produced food. <https://openfoodnetwork.org.uk/peninsula-producers-food-hub/shop>
- The cottage may only be suitable for guests who have a visual, hearing or mobility impairment if they are accompanied. Emergency warning systems only provide audible warnings.

Key Collection, Car Parking & Communications

- Parking is available for two cars on the gravel area in front of the property.
- The level gravelled parking area is approximately 10 metres from the front door.
- There is an outside light to the front of the cottage, illuminating the car park area and the entrance at night.
- The cottage will be available from 4.30pm on your day of arrival.
- The key to the property is kept in a key safe adjacent to the entrance door, xxxcm from floor level. The key can be picked up from the St Davids Escapes office, by prior arrangement, if required.
- WiFi is provided within the cottage.
- Mobile reception can be poor in and around St Davids. Please check with your provider, prior to arrival.

Floor Plan



Entrance to Property & Entrance Hall

- There is one step to the front door which is 25cm high, 17.5cm deep and 91cm wide.
- The front door is 83cm wide and hinged on the right side. The keyhole is 95cm high.
- The entrance is lit by an outside light, controlled by a switch on the inside wall by the front.
- There is a wooden floor with entrance mat.
- The hall is 85cm wide and clear of furniture and obstacles.
- There is good colour contrast between floors, walls and doors.

Lounge

- The lounge is situated on the ground floor with level entry from the hall.
- The door opening width between the hall and lounge is 72cm.
- The room has one sofa and two armchairs with non-feather cushion seating.
- There is a Smart TV with remote control providing subtitles and audio description capability.
- Natural daylight enters through the large front window.
- There is a ceiling pendant light, table lamps and ceiling spotlights.
- There is a log burning stove. The door handle is 50cm from the floor.
- There is a wooden floor with central floor rug.
- There is good colour contrast between floors, walls and doors.
- Audible smoke alarm fitted.

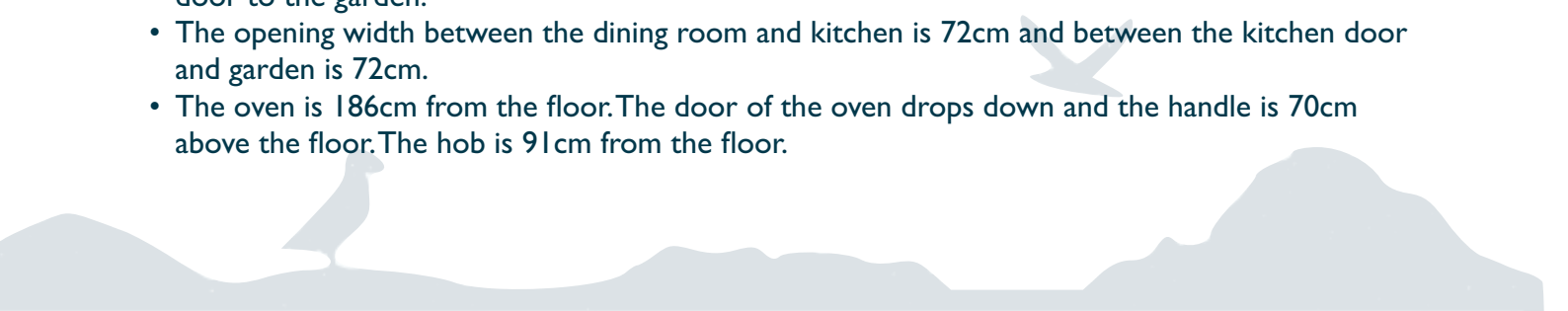
Stairs & Landing

- The stairs and landings are well light with good ceiling heights.
- There are 12 steps (19.5cm high, 25cm deep, 78cm wide) with a handrail on the right side, 95cm high from the stair tread. The stair winds at the half landing for 5 steps.
- The landing is 85cm wide.
- The stair treads are painted with a contrasting colour 'runner'.
- Audible smoke alarm fitted.

Dining Area

- The dining room is situated on the ground floor with level entry from the lounge.
- The door opening width between the lounge and dining room is 72cm.
- There is a dining table with four loose chairs (45cm seat height) and a clear space around the table of 85cm.
- Natural daylight enters through the large front window.
- There is a ceiling pendant light, table lamps and ceiling spotlights.
- The floor is carpeted.
- There is a wooden floor with central floor rug.
- There is good colour contrast between floors, walls and doors.
- Audible smoke alarm fitted.

Kitchen

- The kitchen is situated on the ground floor with level open access from the dining room and door to the garden.
 - The opening width between the dining room and kitchen is 72cm and between the kitchen door and garden is 72cm.
 - The oven is 186cm from the floor. The door of the oven drops down and the handle is 70cm above the floor. The hob is 91cm from the floor.
- 

- The worktop and sink with mixer lever taps are 91cm above the floor. The microwave is on the worktop, and a cordless kettle and toaster.
- The fridge is undercounter with the highest shelf at 60cm and the lowest drawer at 27cm.
- The dining area is within the kitchen. There is a dining table with six loose chairs (45cm seat height) and a clear space around the table of 85cm.
- Natural daylight enters through the large rear window and garden door.
- There is under unit lighting, ceiling pendant light/downlights.
- The floor is tiled.
- There is a good colour contrast between floor, cupboards and work surfaces.
- Audible heat alarm fitted.
- There is a fire blanket located in the kitchen.

Utility Room

- The utility room is situated on the ground floor with level access from the dining room and door to the front parking area.
- The door opening width between the dining room and utility room is 72cm and between the utility room and front is 72cm.
- The worktop and sink with mixer lever taps are 91cm above the floor.
- The fridge is undercounter with the highest shelf at 60cm and the lowest drawer at 27cm.
- Natural daylight enters through the side window.
- There are wall are ceiling downlights.
- The floor is tiled.

Bedroom 1 - Kingsize Ensuite Bedroom - First Floor

- The door opening width between the bedroom and landing is 75cm.
- The height of the king size bed from the top of the mattress to the floor is 65cm and the clear space next to the beds is 35cm.
- Non-feather duvets and pillows are provided.
- The chest of drawers is 105cm high and the bedside tables are 65cm high.
- There is a freestanding wardrobe with door handles at 125cm high and hanging rail at 140cm high.
- Natural daylight enters through the large window.
- There is a ceiling pendant light, floor lamp and table lamps.
- There is a painted wooden floor with bedside floor rugs.
- The door opening width between the bedroom and bath and shower room is 72cm.
- The wash basin is mounted within a vanity unit and 87cm high.
- There is a separate thermostatically controlled shower in a clear glass cubicle with hinged door.
- There is one step down (45cm high) to the bath and wc where the ceiling height is restricted.
- The bath is 53cm high with a shower attachment.
- The toilet seat height is 40 cm high and is only accessible from the front.
- There is a non-slip mat provided for either the shower or bath.
- There are lever taps on both wash basin and bath.
- There are no grab rails or balance aids in either the bath or shower.
- The floor covering is a light coloured vinyl floor.
- The floors, walls and furniture are all light in tone with little contrast in colour.
- There is a heated towel rail, 56cm high to the lowest rail and 90cm high to the highest.
- Natural daylight enters through the velux window.
- There are wall lights and downlights.



Bedroom 2 - Twin Ensuite Bedroom - First Floor

- The door opening width between the bedroom and landing is 75cm.
- The height of the twin beds from the top of the mattress to the floor is 65cm and the clear space next to the beds is 35cm.
- Non-feather duvets and pillows are provided.
- The chest of drawers is 105cm high and the bedside tables are 65cm high.
- There is a freestanding wardrobe with door handles at 125cm high and hanging rail at 140cm high.
- Natural daylight enters through the large window.
- There are wall lights, ceiling pendant light, floor lamp and table lamps.
- There is a painted wooden floor with bedside floor rugs.
- The door opening width between the bedroom and shower room is 72cm.
- The wash basin is mounted within a vanity unit and 87cm high.
- There is a thermostatically controlled shower in a clear glass cubicle with hinged door. The tray is xxcm high.
- There is one step down (45cm high) to the wc.
- The toilet seat height is 40 cm high and is only accessible from the front.
- There is a non-slip mat provided for either the shower or bath.
- There are lever taps on the wash basin.
- There are no grab rails or balance aids in the shower.
- The floor covering is a light coloured vinyl floor.
- The floors, walls and furniture are all light in tone with little contrast in colour.
- There is a heated towel rail, 56cm high to the lowest rail and 90cm high to the highest.
- Natural daylight enters through the velux window.
- There are wall lights and downlights.

Garden

- The door opening width between the kitchen and garden is 75cm.
- There is one step to the garden from the door which is 25cm high, 17.5cm deep and 91cm wide.
- There is a small paved patio area with free standing table (65cm high), four chairs (45cm seat height) and a free-standing BBQ.
- There is level access to a grass lawn area.

Additional Information

- The information folder in the cottage is produced in size 12 font.
- Emergency procedures and contacts are provided in the 'Touch Stay' app.
- The nearest doctor surgery and hospital information are provided in the 'Touch Stay' app.
- The cottage is no smoking throughout.
- Mobility scooters are available to hire in advance from Oriel y Parc in St Davids to explore the city. Telephone 01437 720392
- Explore West Wales accessible attractions <https://www.visitwales.com/destinations/west-wales/access-all-areas-west-wales>



Property Photographs



Entrance Door



Lounge



Lounge



Stair to First Floor



View From Lounge to Dining Room



Dining Room



Kitchen



Kingsize Bedroom



Kingsize Bedroom Ensuite



Single Bedroom



Single Bedroom Ensuite



Garden Terrace

