



Ty Haf Access Statement

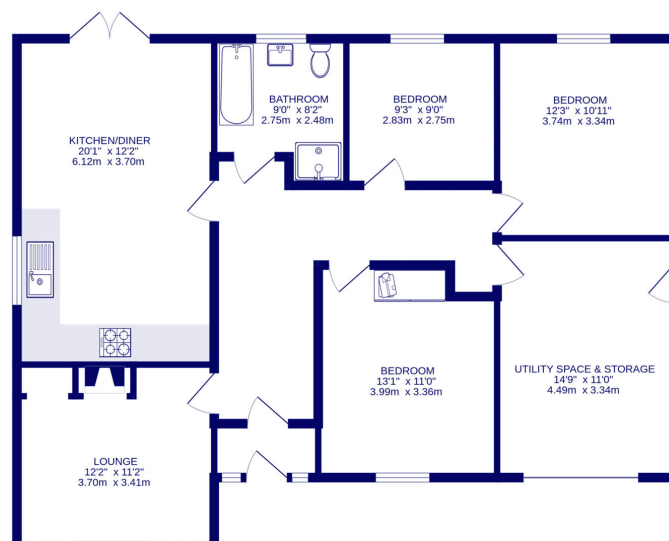
Pre-Arrival

- Bookings can be made online via the website or by phone or email.
- Directions to the property can be found in the 'Touch Stay' app, sent to you before your stay.
- Ty Haf is arranged over one floor.
- You can view the floor plans of the property in this statement and in the 'Touch Stay' app.
- The nearest train station is Haverfordwest, served by trains from Cardiff Central Station and Swansea. There are taxis at the station awaiting all train service arrivals and there is a limited bus service to St Davids.
- The nearest bus stop is in St Davids centre, approximately 30m from the cottage. More information on bus times can be found at <https://bustimes.org/localities/st-davids-pembrokeshire>
- If you require the statement information, directions or other details in a different format, please contact us via our website, e-mail, or telephone.
- Delivery of provisions can be arranged by using one of the large supermarket chains and the local St Davids Peninsula Producers Food Hub, who offer a delivery service of locally produced food. <https://openfoodnetwork.org.uk/peninsula-producers-food-hub/shop>
- The cottage may only be suitable for guests who have a visual, hearing or mobility impairment if they are accompanied. Emergency warning systems only provide audible warnings.

Key Collection, Car Parking & Communications

- Parking is available for two cars on the paved area in front of the garage. This is accessed through a gated entrance from the road. If you can reverse into the drive, it will make it easier for you to drive out.
- The parking area is approximately 5 metres from the front door, accessed on a level paved path.
- There are outside lights to the front of the cottage, illuminating the car park area and the entrance at night.
- The cottage will be available from 4.30pm on your day of arrival.
- The key to the property is kept in a key safe to the right side of garage, near to the waste bin area, 165cm from floor level. The key can be picked up from the St Davids Escapes office, by prior arrangement, if required.
- WiFi is provided within the cottage.
- Mobile reception can be poor in and around St Davids. Please check with your provider, prior to arrival.

Floor Plan



Entrance to Property & Entrance Hall

- There is one step to the front door which is 19cm high.
- The front door is 72cm wide and hinged on the right side.
- The entrance is illuminated by an outside light, controlled by a switch on the inside porch wall.
- The floor covering inside the entrance porch is tiled with a door mat and in the hall there is a wooden parquet floor carpet.
- There is a door with from the porch to the hall, 76cm wide.
- The hall is 112cm wide at its narrowest point leading to the bedrooms.
- There is good colour contrast between floors, walls and doors.

Lounge

- The lounge has level entry from the hall.
- The door opening width between the hall and lounge is 71cm.
- The room has two sofas and a foot stool with non-feather cushion seating.
- There is a Smart TV with remote control providing subtitles and audio description capability.
- Natural daylight enters through the large front window which has blinds and curtains.
- There is a floor lamp and ceiling pendant light.
- There is a log burning stove on a hearth. The door handle is 30cm from the floor.
- There is a wooden floor with central floor rug.
- There is good colour contrast between floors, walls and doors.

Kitchen & Dining/Sitting Area

- The kitchen sitting room has level access from the hall.
- The door opening width between the hall and kitchen is 74cm.
- The oven is 81cm from the floor. The door of the oven drops down and the handle is 73cm above the floor. The hob is 92cm from the floor.
- The worktop and sink with mixer lever taps are 92cm above the floor. The microwave is on a raised plinth to the rear of the worktop with controls 65cm from the worktop edge. The cordless kettle and toaster are on the worktop.
- There is an integrated fridge freezer with the highest fridge shelf at 171cm and the lowest freezer drawer at 43cm.
- Glasses can be moved from the wall cupboards if required. Please request this when booking.
- Natural daylight enters through the large side facing window and the French doors to the garden.
- There is a floor lamp by the sofa and ceiling downlights.
- The floor is tiled.
- There is a dining table with six loose chairs and a clear space around the table of 135cm.
- There is a sofa with non-feather cushion seating.
- There is a Smart TV with remote control providing subtitles and audio description capability.
- There is limited colour contrast between floor and cupboards, only the worktop surface.
- Audible heat alarm fitted.
- There is a fire blanket located on the worktop to the left of the microwave.



Utility Room & Store

- The door opening width between the hall and utility room is 70cm and between the utility room and garden is 72cm. There is a step down as you enter, 8cm high, and a step up to the garden door, 12cm high.
- The worktop and sink with mixer lever taps are 91cm above the floor.
- The washing machine is undercounter.
- Natural daylight enters through the side window and glazed door to the garden.
- There is a ceiling light.
- There is a non-slip vinyl floor.


Shower Room

- The shower room has level access from the hall.
- The door opening width between the hall and shower room is 72cm.
- The toilet seat height is 44 cm high and is accessible from the front and left side.
- The wash basin is vanity mounted and 87cm high.
- The bath is 61cm high with central paddle head taps and hand held shower attachment.
- There is a separate thermostatic controlled shower with hinged glass screen, 64cm wide. There is a step up to the shower tray, 18cm high.
- There is no non-slip mat provided for the bath.
- There is a paddle head tap on the wash basin.
- There are no grab rails or balance aids in the bath.
- The floor covering is plank effect tile.
- The floor contrasts with the walls and furniture in colour and finishes.
- There is a heated towel rail, 81 cm high to the lowest rail and 180cm high to the highest.
- Natural daylight enters through the rear window.
- There are ceiling downlights.

Bedroom 1 - Kingsize Bedroom

- The door opening width between the bedroom and hall is 72cm.
- The height of the Kingsize bed from the top of the mattress to the floor is 57cm and the clear space around the bed is 90cm.
- Non-feather duvets and pillows are provided.
- The chest of drawers is 98cm high and the bedside tables are 61cm high.
- There is a wall fixed hanging rail at 174 - 180cm high.
- Natural daylight enters through the front window which has curtains.
- There are bedside lights and a ceiling pendant light.
- The floor covering is a short pile carpet.
- The floors and walls contrast in colour.

Bedroom 2 - Kingsize Bedroom

- The door opening width between the bedroom and hall is 71cm.
 - The height of the Kingsize bed from the top of the mattress to the floor is 51cm and the clear space around the bed is 76cm.
 - Non-feather duvets and pillows are provided.
 - The chest of drawers is 77cm high and the bedside tables are 67cm high.
 - There is a wall fixed hanging rail at 166cm high.
 - There is a Smart TV with remote control providing subtitles and audio description capability.
 - Natural daylight enters through the large rear garden window.
- 

- There are bedside lights and a ceiling pendant light. The floor covering is a short pile carpet.
- The floors and walls contrast in colour.

Bedroom 3 - Single Bedroom

- The door opening width between the bedroom and hall is 75cm.
- The height of the single bed from the top of the mattress to the floor is 50cm and the clear space to the side of the bed is 121cm.
- Non-feather duvets and pillows are provided.
- The bedside chest of drawers is 73cm high and there is a tall boy with a hanging rail 139cm high.
- Natural daylight enters through the rear garden window with curtains.
- There are wall lights, ceiling pendant light and table lamps.
- There is a bedside light and a ceiling pendant light.
- The flooring covering is a short pile carpet.

Garden

- The door opening width between the Utility Room and side path to the garden is 86cm and through the Dining/Sitting room French doors to the garden is 125cm.
- There is one step to the garden from the French doors which is 29cm high.
- There is a level paved patio area with dining table (72cm high), and four chairs (45cm seat height).
- There is small step down to a grass lawn area, 10cm high.
- There is a concrete path (105cm wide), that follows the rear of the house, linking the garden and parking area. This is accessed through a gate, 82cm wide with latch 110cm high.

Additional Information

- The information folder in the cottage is produced in size 12 font.
- Emergency procedures and contacts are provided in the 'Touch Stay' app.
- The nearest doctor surgery and hospital information are provided in the 'Touch Stay' app.
- The cottage is no smoking throughout.
- Mobility scooters are available to hire in advance from Oriel y Parc in St Davids to explore the city. Telephone 01437 720392
- Explore West Wales accessible attractions <https://www.visitwales.com/destinations/west-wales/access-all-areas-west-wales>

Property Photographs



Path from Road to Entrance Door



Parking Area



Entrance Hall





Lounge



Lounge



Kitchen



Kitchen & Dining Area



Lounge Dining Area



Lounge Dining Area



Utility Room



Bath & Shower Room



Bath & Shower Room



Kingsize Bedroom 1



Kingsize Bedroom 1



Single Bedroom



Rear Lawned Enclosed Garden



Rear Lawned Garden



Front Enclosed Garden